



The Journey

November 17, 2024
9am

Living Lord Lutheran Church
11107 Palmbrush Trail
Lakewood Ranch, Florida 34202
941-753-9365



Evangelical Lutheran Church in America
God's work. Our hands.

PRE-SERVICE MUSIC The Holy Spirit calls us together as the people of God.

WELCOME AND ANNOUNCEMENTS

GATHERING SONG

Morning Has Broken



1 Morn - ing has bro - ken like the first morn - ing;
2 Sweet the rain's new fall, sun - lit from heav - en,
3 Mine is the sun - light! Mine is the morn - ing,



black-bird has spo - ken like the first bird.
like the first dew - fall on the first grass.
born of the one light E - den saw play!



Praise for the sing - ing! Praise for the morn - ing!
Praise for the sweet - ness of the wet gar - den,
Praise with e - la - tion, praise ev - 'ry morn - ing,



Praise for them, spring - ing fresh from the Word!
sprung in com - plete - ness where God's feet pass.
God's re - cre - a - tion of the new day!

Text: Eleanor Farjeon, 1881–1965
Music: BUNESSAN, Gaelic tune
Text © Miss E. Farjeon Will Trust, admin. David Higham Associates

OPENING SONG

Hosanna (Praise Is Rising)

Words and Music by
Paul Baloche and Brenton Brown

♩=114

VERSE

G⁵



1. Praise _ is ris - ing, eyes _ are turn - ing _ to You; .
2. Hear _ the sound _ of hearts _ re - turn - ing _ to You; .

5

C²

G⁵



— We turn to You; — Hope _ is
— We turn to You; — In _ Your

10

C²



stir - ing hearts _ are yeam - ing _ for You; _
King - dom bro - ken lives _ are _ made new, _

14

G⁵



We long for You; _ 'Cause when we see _
You make us new; _

PRE-CHORUS

17

D⁽⁴⁾

C

G⁵



— You, we find strength _ to face the day; _ In Your pres-

Hosanna (Praise Is Rising) - 2

21 $D^{(4)}$ C G^5 D

- ence all our fears — are — washed a-way, washed a - way. — Ho -

Detailed description: This block contains the first line of music, measures 21 to 24. The key signature has one sharp (F#). The melody consists of quarter and eighth notes. Chords are indicated above the staff: D(4) for measures 21-22, C for measure 23, G5 for measure 24, and D for measure 25. The lyrics are: "- ence all our fears — are — washed a-way, washed a - way. — Ho -".

CHORUS

25 G^{sus} G Em^7 C^2

-san - na, ho - san - na, — You are the God .

Detailed description: This block contains the second line of music, measures 25 to 28. The melody features a long note in measure 25 followed by eighth notes. Chords are indicated above the staff: G(sus) for measure 25, G for measure 26, Em7 for measure 27, and C2 for measure 28. The lyrics are: "-san - na, ho - san - na, — You are the God .".

29 G^5 D^{sus} Em^7 C^2

— who — saves us, wor- thy of all — our prais - es; — Ho -

Detailed description: This block contains the third line of music, measures 29 to 32. The melody consists of quarter and eighth notes. Chords are indicated above the staff: G5 for measure 29, D(sus) for measure 30, Em7 for measure 31, and C2 for measure 32. The lyrics are: "— who — saves us, wor- thy of all — our prais - es; — Ho -".

33 G^{sus} G Em^7 C^2

-san - na, ho - san - na, — come have Your way .

Detailed description: This block contains the fourth line of music, measures 33 to 36. The melody features a long note in measure 33 followed by eighth notes. Chords are indicated above the staff: G(sus) for measure 33, G for measure 34, Em7 for measure 35, and C2 for measure 36. The lyrics are: "-san - na, ho - san - na, — come have Your way .".

37 G^5 D^{sus} Em^7 C^2

— a - mong us; We wel- come You here, — Lord Je - sus. —

Detailed description: This block contains the fifth line of music, measures 37 to 40. The melody consists of quarter and eighth notes. Chords are indicated above the staff: G5 for measure 37, D(sus) for measure 38, Em7 for measure 39, and C2 for measure 40. The lyrics are: "— a - mong us; We wel- come You here, — Lord Je - sus. —".

INSTR

41 G^{sus} G Em^7 C^2 G^5 D^{sus} Em^7

Detailed description: This block contains the sixth line of music, measures 41 to 48. The staff is mostly empty, indicating an instrumental section. Chords are indicated above the staff: G(sus) for measure 41, G for measure 42, Em7 for measure 43, C2 for measure 44, G5 for measure 45, D(sus) for measure 46, and Em7 for measure 47. Measure 48 is also empty.

PRE-CHORUS

49 C^2 G $D^{(4)}$

'Cause when we see — You, we find strength .

Detailed description: This block contains the seventh line of music, measures 49 to 52. The melody starts with a double bar line and a repeat sign in measure 49, followed by a triplet of eighth notes in measure 50, and then quarter notes in measures 51 and 52. Chords are indicated above the staff: C2 for measure 49, G for measure 50, and D(4) for measure 51. The lyrics are: "'Cause when we see — You, we find strength .".

56 C G⁵ D⁽⁴⁾

— to face the day; — In Your pres - ence all our fears .

60 C 1. G⁵ 2. G⁵

— are — washed a - way. 'Cause when we see washed a - way..

64 D CHORUS G^{sus} G Em⁷

— Ho - san - na, ho - san - na, -

69 C² G⁵ D^{sus} Em⁷

— You are the God — who — saves us, wor - thy of all — our prais - es; -

73 C² G^{sus} G Em⁷

— Ho - san - na, ho - san - na, -

77 C² G⁵ D^{sus}

— come have Your way — a - mong us; We wel - come You here, .

80 Em⁷ 1. C² 2. C² ENDING G^{sus} G

— Lord Je - sus. — Ho -

86 G^{sus} G G^{sus} G

Ho - san - na, ho -

90 G^{sus} 1. G 2. G

Ho -

OPENING PRAYER

FIRST READING: Hebrews 10:11-14 (15-18) 19-25

A reading from Hebrews.

¹¹And every priest stands day after day at his service, offering again and again the same sacrifices that can never take away sins. ¹²But when Christ had offered for all time a single sacrifice for sins, "he sat down at the right hand of God," ¹³and since then has been waiting "until his enemies would be made a footstool for his feet." ¹⁴For by a single offering he has perfected for all time those who are sanctified. ¹⁵And the Holy Spirit also testifies to us, for after saying,

¹⁶"This is the covenant that I will make with them after those days, says the Lord:
I will put my laws in their hearts,
and I will write them on their minds,"

¹⁷he also adds,

"I will remember their sins and their lawless deeds no more."

¹⁸Where there is forgiveness of these, there is no longer any offering for sin.

¹⁹Therefore, my friends, since we have confidence to enter the sanctuary by the blood of Jesus, ²⁰by the new and living way that he opened for us through the curtain (that is, through his flesh), ²¹and since we have a great priest over the house of God, ²²let us approach with a true heart in full assurance of faith, with our hearts sprinkled clean from an evil conscience and our bodies washed with pure water. ²³Let us hold fast to the confession of our hope without wavering, for he who has promised is faithful. ²⁴And let us consider how to provoke one another to love and good deeds, ²⁵not neglecting to meet together, as is the habit of some, but encouraging one another, and all the more as you see the Day approaching.

GOSPEL SONG

Vs. 1 only


Spirit Song

Words and Music by
John Wimber

♩=90


VERSE

D A/E D/F# G A⁷ F#m⁷




1. Oh, let the Son of God en - fold you with His Spir - it and His
2. Oh, come and sing this song with glad - ness as your hearts are filled with

4 Bm Em⁷ A G/A A D




love; Let Him fill your heart and sat - is - fy your soul.
joy; Lift your hands in sweet sur - ren - der to His name.

8 A/E D/F# G A⁷ F#m⁷



Oh, let Him have those things that hold you, and His Spir - it, like a
Oh, give Him all your tears and sad - ness, give Him all your years of


12 Bm Em⁷ A G/A A⁷ D



dove, will de - scend up - on your life and make you whole. _____
pain, and you'll en - ter in - to life in Je - sus' name. _____

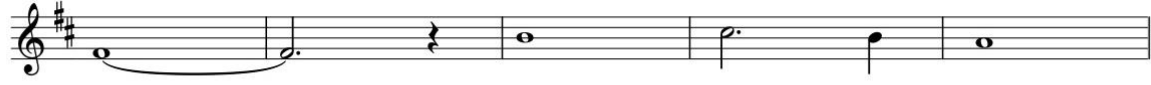
CHORUS

17 G A⁷/G F#m⁷ Bm⁷ Em⁷ A



Je - sus, oh Je - sus, come and fill Your

23 D G A⁷/G F#m⁷




lambs. _____ Je - sus, oh Je -

CCLI Song # 27824
© 1979 Mercy / Vineyard Publishing
For use solely with the SongSelect®. Terms of Use. All rights reserved. www.ccli.com
CCLI License # 2925242

Spirit Song - 2

28 Bm⁷ Em⁷ A A⁷ G/A D



-sus, come and fill Your lambs.

GOSPEL READING: Mark 13:1-8

A reading from Mark.

¹As he came out of the temple, one of his disciples said to him, "Look, Teacher, what large stones and what large buildings!" ²Then Jesus asked him, "Do you see these great buildings? Not one stone will be left here upon another; all will be thrown down."

³When he was sitting on the Mount of Olives opposite the temple, Peter, James, John, and Andrew asked him privately, ⁴Tell us, when will this be, and what will be the sign that all these things are about to be accomplished?

⁵Then Jesus began to say to them, "Beware that no one leads you astray.

⁶Many will come in my name and say, 'I am he!' and they will lead many astray. ⁷When you hear of wars and rumors of wars, do not be alarmed; this must take place, but the end is still to come. ⁸For nation will rise against nation, and kingdom against kingdom; there will be earthquakes in various places; there will be famines. This is but the beginning of the birth pangs.

MESSAGE

“Babylon”

MESSAGE SONG


Who Am I

Words and Music by
Mark Hall

♩ = 66


VERSE

G D/F# Em⁷



1. Who am I, _____ that the Lord of all the earth _____ would
(2. Who am I,) _____ that the eyes that see my sin _____ would

4 D C² D/C C



care to know my name, _____ would care to feel my hurt? _____
look on me with love _____ and watch me rise a - gain? _____

8 G D/F# Em⁷



Who am I, _____ that the Bright and Morn - ing Star _____ would
Who am I, _____ that the voice that calmed the sea _____ would


12 D C² D/C C



choose to light the way _____ for my ev - er wan - d'ring heart? _____
call out through the rain _____ and calm the storm in me? _____

PRE-CHORUS 1a

16 G/B C D^{sus} Em⁷



_____ Not be - cause of who I am, _____ but be - cause of what You've done . .

20 D/F# Em⁷ D/F# C



_____ Not be - cause of what I've done, _____ but be - cause of who You are . .

24 **CHORUS**
 D C/D G D/F# Em7
 I am a flow - er quick - ly fad - ing, here to -

28 D C D
 -day and gone _ to - mor - row; _ A wave tossed _ in the o -

31 C D G D/F#
 - cean, a va - por in _ the _ wind. _ Still You hear me when _ I'm call -

35 Em7 D
 - ing. Lord, You catch me when _ I'm fall -

37 C D C Last time to Coda ⊕
 - ing. _ And You've told me who _ I am: _

40 **INSTRUMENTAL 1**
 G C² Em7
 I am Yours, _ I am Yours. _

44 D G C Em7

48 ^{D^{sus}} | 2. INSTRUMENTAL 2
 C D Em D/F# C G/B Am

2. Who am I am Yours.

52 G C/E D/F# C G/B Am G/B Am G

I am Yours.

56 Em D/F# F C/E Cm/Eb

I am Yours.

60 PRE-CHORUS 1b
^{D^{sus}} C ^{D^{sus}} Em⁷

Not be - cause of who I am, but be - cause of what You've done.

64 D/F# Em⁷ D/F#

Not be - cause of what I've done, but be -

67 C D/F# G G/B C D.S. al Coda

-cause of who You are.

70 ^{⊕ Coda} C D ENDING
 Em⁷ D^{sus}

I am Yours,

73 C ^{D^{sus}} G

I am Yours.

PRAYERS OF INTERCESSION

Rooted in God's abundant love for the world, let us pray for our neighbors, the church, and all of creation.

A brief silence.

O God, in the washing of water you set us free from the power of sin and death. Unite all the baptized in the covenant you have made with us, as we strive for your justice and peace in all the earth. Merciful God,
receive our prayer.

By your merciful might you sustain all creation. Stir us from complacency with the harm we inflict on the earth, and urge us to adopt sustainable ways of life that protect and restore our planet. Merciful God,
receive our prayer.

With a selfless power you protect all who take refuge in you. As nations rise against nations, defend all who are displaced or affected by war or violence. Empower all people and nations to pursue peace. Merciful God,
receive our prayer.

In your presence you give fullness of joy. Care for all for whom joy feels distant. Be present with persons experiencing depression, anxiety, addiction, or any mental illness. Bring them healing and wholeness. Merciful God,
receive our prayer.

Through the years you have gathered your church and this community for worship, fellowship, formation, and service. Enable us to look beyond the walls of our building to perceive where you are calling us forward. Merciful God,
receive our prayer.

Here other intercessions may be offered.

With thanksgiving we remember (*Elizabeth of Hungary and all*) saints and angels who delight in your everlasting presence. As their lives inspire ours, provoke us always to love, holding fast to the confession of our hope in you. Merciful God,
receive our prayer.

We offer our prayers to you, gracious God, trusting in your boundless love for all that you have made, through Jesus Christ our Savior.

Amen.

OFFERING

Let us give thanks to God for our many blessings as we offer our monetary gifts for the mission and ministry of this community of faith. For those who are online, you can offer your financial support for our mission and ministries by going to our website livinglordfl.org and clicking on the give button at the top of the home page.

OFFERING MUSIC *He's Got the Whole World in His Hands*
Traditional spiritual/Keveren

APOSTLES CREED

**I believe in God, the Father almighty,
creator of heaven and earth.**

**I believe in Jesus Christ, God's only Son, our Lord,
who was conceived by the Holy Spirit,
born of the virgin Mary,
suffered under Pontius Pilate,
was crucified, died, and was buried;
he descended to the dead.
On the third day he rose again;
he ascended into heaven,
he is seated at the right hand of the Father,
and he will come to judge the living and the dead.**

**I believe in the Holy Spirit,
the holy catholic church,
the communion of saints,
the forgiveness of sins,
the resurrection of the body,
and the life everlasting. Amen.**

THE MEAL

In the night in which he was betrayed, our Lord Jesus took bread, and gave thanks; broke it, and gave it to his disciples, saying: Take and eat; this is my body, given for you. Do this for the remembrance of me.

Again, after supper, he took the cup, gave thanks, and gave it for all to drink, saying: This cup is the new covenant in my blood, shed for you and for all people for the forgiveness of sin. Do this for the remembrance of me.

LORD'S PRAYER

Our Fa - ther who art in hea ven hal low ed be thy
name Thy king dom come thy will be done on earth as it
is in hea ven Give us this day our dai ly bread and for
give us our tres pass es as we for give those who tres pass a gainst
us And lead us not in to temp ta tion but de li ver us from
e vil for the king dom and the pow er and the glo ry are Yours Now and for
ev er A men

MEAL INSTRUCTIONS

Holy Communion here is just this simple: All are welcome because this is the Lord's table. It is Jesus who invites us to share in this meal. So, it doesn't matter who you are or how you are but that you simply come because God's gifts are...

C Free

Lamb Of God

Words and Music by
Twila Paris

♩=52

VERSE

C G C G/B Am Fmaj7 C/E

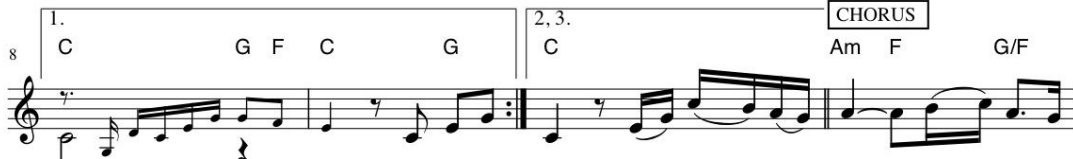


1. Your on - ly Son, no sin to hide; But You have sent — Him from Your —
 (2. Your gift of) love they cru - ci - fied; They laughed and scorned — Him as He —
 (3. I was so) lost I should have died; But You have brought — me to Your —

4 G^{sus} G G/F Am Fmaj7 C/E Am Fmaj7 C/G G^{sus}



side, — to walk up - on — this guilt - y sod, — and to be - come the Lamb of
 died. — The hum - ble King — they named a fraud, — and sac - ri - ficed the Lamb of
 side — to be led by — Your staff and rod, — and to be called a lamb of

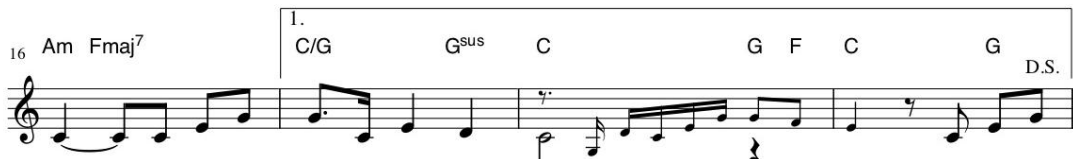


God. 2. Your gift of God. Oh — Lamb — of — God, — sweet Lamb of

12 C/E C G/B Am Fmaj7 C/E G^{sus} G G/F Am Fmaj7 C/E



God. — I love the ho - ly Lamb of — God. — Oh, wash me in — His pre - cious



blood, — my Je - sus Christ, the Lamb of God. 3. I was so

CCLI Song # 16787
 © 1985 Mountain Spring Music | Straightway Music
 For use solely with the SongSelect® Terms of Use. All rights reserved. www.ccli.com
 CCLI License # 2925242

Lamb Of God - 2



Christ, the Lamb of God.

MEAL SONG 2

BECAUSE HE LIVES

G&W GAITHER

G D⁷ G C G D⁷

1. GOD SENT HIS
2. HOW SWEET TO
3. AND THEN ONE

G C

5 SON THEY CALLED HIM JE - SUS HE CAME TO
 HOLD A NEW - BORN BA - BY AND FEEL THE
 DAY I'LL CROSS THAT RIV - ER AND FIGHT LIFE'S

G Am⁷ D⁷

9 LOVE HEAL, AND FOR - GIVE HE LIVED AND
 PRIDE OF JOY HE GIVES BUT GREAT - ER
 FIN - AL WAR WITH PAIN AND THEN AS

G G⁷ C Cmi

13 DIED TO BUY MY PAR - DON AN EMP - TY
 STILL THE CALM AS - SUR - ANCE THIS CHILD CAN
 DEATH GIVES WAY TO VIC - TRY I'LL SEE THE

G D⁷ G C G D⁷_{SUS}

17 GRAVE IS THERE TO PROVE MY SAV - IOR LIVES BE - CAUSE HE
 FACE UN - CER - TAIN DAYS BE - CAUSE HE LIVES
 LIGHTS OF GLO - RY AND I'LL KNOW HE REIGNS

G G⁷ C

21 LIVES I CAN FACE TO - MOR - ROW BE - CAUSE HE
 (BE - CAUSE HE LIVES) (I CAN FACE TO - MOR - ROW)

G Am⁷ D⁷

25 LIVES ALL FEAR IS GONE BE - CAUSE I
 (BE - CAUSE HE LIVES) (ALL FEAR IS GONE)

BECAUSE HE LIVES

2

29 KNOW (BE - CAUSE) I KNOW HE HOLDS THE FU - TURE AND LIFE IS

33 WORTH THE LIV - ING JUST BE-CAUSE HE LIVES AND LIFE IS

37 WORTH THE LIV - ING JUST BE-CAUSE HE LIVES _____

Chords: G, G7, C, Cm, D7, REPEAT 2X, G, G

BLESSING AFTER COMMUNION

May this body and blood of our Lord and Savior, Jesus the Christ, strengthen you and keep you in God's grace now and forevermore.

C Amen

SENDING SONG

I Walk By Faith

Words and Music by
Chris Falson

$\text{♩} = 128$ **CHORUS**

G F²

I walk by faith, each step by

4 C G

faith; To live by faith, I put my trust in — You.

8 **VERSE**

1, 3. 2, 4. Am G/B

Fine

I Ev - 'ry step — I take —

12 C D Am G/B

is a step — of faith; — No wea - pon formed a - gainst — me shall

16 C D Am G/B

pros - per. And ev - 'ry prayer — I make —

20 C D Am

is a prayer — of faith; — If my God is for —

23 G F D D.C. al Fine

— me, who can be a - gainst — me? I

DISMISSAL

DISMISSAL SONG

JOY IN THE JOURNEY

SWING
 ♩=168

INTRO

5 THERE IS A JOY IN THE JOUR - NEY THERE'S A

9 LIGHT WE CAN LOVE ON THE WAY

13 THERE IS A WON - DER AND WILD - NESS TO LIFE AND

17 FREE - DOM FOR THOSE WHO O - BEY AND

21 ALL THOSE WHO SEEK IT SHALL FIND IT A

25 PAR - DON FOR ALL WHO BE - LIEVE

29 HOPE FOR THE HOPE - LESS AND SIGHT FOR THE BLIND

33 AND FREE - DOM FOR THOSE WHO O - BEY



The Altar Flowers are given by Joyce Dous in memory of her brother, John Perseo.

The Eternal Candle for the month of November is given by Sandy Coffman to wish Happy Birthday her daughter, Colleen and great-grandson, Kane.

The Altar Guild Barbara VanBuren, Karen Symos and Nancy Taylor

COMMUNION DISTRIBUTION *All who have faith in the words, “given for you” and “shed for you for the forgiveness of sin” is really worthy and well prepared to receive this sacrament. Communion is by individual cup (wine or white grape juice and gluten free wafers are available). Let an usher know if you need communion brought to you.*

The **Sunday bulletin** focuses on the what, when, and where of announcements and ministry opportunities for the upcoming week. Detailed information is available on our **Facebook** page, in the **Link**, which is published weekly, and in the **Voice**, our monthly newsletter, and on our **website** – www.livinglordfl.org. Extra copies of the **VOICE** are available in the Narthex in the mail bins on the south wall.

Financial Support Thank you for your continued support for our ministry and mission. Offerings can be mailed to the church or online giving with banking or credit card payments at www.livinglordfl.org (Give Tab).

Attendance Pads Please fill out the attendance register and pass it down the aisle and let us know you were here. Add your name and if you are communing place a “C” in the member or visitor column. Otherwise, simply place a checkmark (✓) in that column. This is a change to satisfy our constitutional requirement to maintain a record of those who have communed. Thank you for helping us with this detail.

Covid-19 Guidelines Update:

The Worship Team’s current guidelines include: Optional masks. Each individual should choose what is right for them and the use of the common cup during communion distribution is suspended until further notice.

SCRIP after each service. An ongoing fundraiser designated towards Building Improvement. Purchase gift cards at the table. Orders are placed every week for pick-up the following week.

SUNDAY SCHOOL K thru 3rd grade, 4th grade thru 7th grade and Faith Formation for teens - every Sunday from 10:05 to 10:55. Confirmation class is still being determined.

ADULT SUNDAY SCHOOL 10:05-10:50am in the Activities Hall. Bible study of the Old testament and Epistle lessons read in Sunday worship is an opportunity to dig deeper into the message with other adults. Bring your cookie, coffee, questions and insights as we explore with friends the readings' connections to our lives today.

GENERAL OFFERING #4010		
YEAR-TO-DATE	2024 BUDGET	2023 ACTUAL
October 31, 2024 \$264,276.08	October 31, 2024 \$303,305.15	October 31, 2023 \$301,210.16

Hurricane Helene & Milton Lutheran Disaster Response working alongside synods and other partners, is prepared to provide support throughout the impacted region. Gifts to "Hurricane Response" will be used (100%) to assist those affected by hurricanes, until the response is complete. Give through your congregation **or** make your check out to Lutheran Disaster Response and send to: Evangelical Lutheran Church in America, ELCA Gift Processing Center, P.O. Box 1809, Merrifield, VA 22116-8009 and write "Where needed most" or "Hurricane Response" in the memo line.

CHRISTMAS POINSETTIAS 8 inch, red poinsettias will be available for \$12.00. Flower order envelopes are on the Welcome Desk. Please indicate how many poinsettias you would like. Envelopes can be placed in the offering plate.

PUB THEOLOGY All are welcome to join us on Wednesday, December 12. Share views about how God interacts in our everyday lives? At the Beef O' Brady's, Lakewood Ranch Blvd, 6:30pm. The format is simple: beer, conversation, and God. For more information contact Doug Holst at (813) 447-9917.

OUR DAILY BREAD SERVERS

We need 6 servers on December 7th from 9:15 am until approximately 11:45 am. No experience required, on the job training, pay is great, hearing the “thank-yous” from the homeless as you serve lunch. Please do not forget to include your phone number when signing up. There may be changes required at the last minute and we'll need to reach you. If you want to help, but have questions, call **Bob Scott, (941) 758-5954 or (817) 313-2945.**

ANGEL TREE - The tree with Angels IS HERE TODAY. The Angels and gifts will need to be back at church on Sunday December 1st.

CHRISTMAS IS COMING! The church and the Christmas trees will be decorated on Saturday, November 30th at 10:00am. If you can help, please contact Stephney at 941-782-8005 or Marilyn at 614-570-5483.

BUILDING IMPROVEMENT NEWS

As we wait for our roof to be repaired, we continue to concentrate on completing the corridors, kitchen and Narthex. With the corridors now being painted we will clean the tile floor and install the base. Bulletin boards are being studied to determine what can be updated or is needed.

Week of November 18-24

Monday

*Faith Talks 10am
Tai Chi 10am
AA Meeting 11:30am
Boy Scouts 6pm
GA Meeting 7pm*

Tuesday

*AA & Al-Anon Meeting 11:30 am
Cub Scouts 6pm
AA Meeting 7pm*

Wednesday

*AA Meeting 9:30am, 11:30am
Pastor's Bible Study 1pm
Girl Scouts 6pm
Council Meeting 7pm*

Thursday

*AA Meeting 11:30am
Building Improvement Mtg 3pm
By Grace 6:30pm*

Friday

*GA Meeting 9:30am
Crafting 10:30am
AA Meeting 11:30am
AA Meeting 6pm, 8pm*

Saturday

*AA Meeting 4pm
Al-Anon Meeting 4pm*

Sunday

***7:45am** Traditional Service
9am The Journey
11am Traditional Service
AA Meeting 6:30pm*

WELCOME NEW MEMBERS!!! *Please be sure to greet our new members.*

Richard and Lynne Watson
Les and Jan Kraus

Cindy King
Wally Oetjen

CHURCH COUNCIL Interested in being on our church council starting in January 2025? Talk to Pastor Ed or Maggie to make us aware of your interest. Our council meets once a month to discuss the business of LLLC.

CHRISTIAN LIFE Our current small groups are starting up this fall. If you are interested in being a part of our existing small groups or being a part of a new group, talk to Deb Miller and sign up on the clipboard in the Narthex.

STEWARDSHIP CAMPAIGN

As our Stewardship campaign is underway, we truly thank everyone for their continued faith and support. We hope you will reflect on your commitment to our church and ministries as we plan for 2025. Please return your Pledge and Time and Talent Survey by November 24th.

Giving Tip: Living Lord can accept stock donations.

QUILT RAFFLE Please look forward to our holiday raffle and silent auction/sale by the handicrafts/quilting group, A Stitch and A Prayer, December 1st and 8th. Raffle tickets will be \$5 each or \$20/4 tickets. Proceeds will go toward supplies for future community projects. Donations are always appreciated. Thanks for your support!

THANKSGIVING EVE SERVICE will be held on Wed, Nov 27th at 6:30pm.

ADVENT SERVICES There will be mid-week services on Wednesday December 4, 11 and 18 at 6:30pm.

CHRISTMAS EVE SERVICES will be at 4:00pm and 7:00pm.

A New Season Calls YOU for Faith Talks!
Let's get together on
Mondays at 10:00-11:30 AM in Activities Hall

Beginning in October, we will resume thought-provoking discussions from current news and talk about some related Bible readings. All members and friends are welcome to attend any or all sessions. Each week's topic will be different.

What is included in this 90-minute adult forum experience?

- 1. In the News.** Printed lessons will present a quick summary of a news topic and cite the sources for more detail. (*Selected by The Wired Word editorial team.*)
- 2. The Big Questions.** We will be challenged with 3-6 critical questions raised by the topic being discussed. We often expand based on our own ideas and experiences.
- 3. Scripture Confronts the News.** From Old and New Testament, we will read 5-6 verses to enlighten today's issue. What does God want us to know? How is the Holy Spirit guiding our responses? Can we connect living today to the message?
- 4. Participation.** Members explore the ideas presented, contribute their own experiences, raise questions, and consider how to apply faith today. We expect diverse opinions, expressed in love and friendship. We encourage self-expression.
- 5. Closing prayer.** We address God and focus on ways He has guided us today.

The Wired Word offers us two the topics, based on recent news events. One of these weekly topics will be covered in our 90 minutes together. All printed lesson materials are provided every week at the Monday class to all attending. Unlike previous church courses, there is NO video component for this class. We will read aloud and use our Bibles. We will learn through active thinkers, personal experiences, and conversational insights. (<https://www.thewiredword.com>)

Abundant life means adapting to changes in society. Be informed with us!

Just 90 minutes on Mondays offers a chance to practice and grow by expressing ourselves in matters of Christian daily life.
We are free to speak our concerns and seek answers,
because we trust our relationships among friends!
Sometimes we even change our minds about the subject!

For more information and to join us, contact Ruth McConnell, Facilitator, 941-751-8053.



Living Lord Lutheran Church

Phone: (941) 753-9365 Fax: (941) 758-9015

Web Site: www.LivingLordFL.org

Information: Info@LivingLordFL.org

Monthly Newsletter: Voice@LivingLordFL.org

All God's Children Preschool Phone: (941) 739-2776

Interim Pastor	Ed Holloway	753-9365	revelholloway@gmail.com
Parish Administrator	Maggie Hammond	753-9365	maggie@livinglordfl.org
Minister of Music	Thomas Pizzi	753-9365	tompno3@gmail.com
All God's Children Director	Erin Bonifate	739-2776	agcerin@gmail.com
Office Clerk	Marianne Strimer	753-9365	marianne@livinglordfl.org

Church Council Officers

President	Rebecca Powers	913-306-5415	llcprresident@gmail.com
Vice President	Rich Jones	614-570-6540	j42hcir@gmail.com
Treasurer	Mike Gutzler	978-857-7172	mjdj4togo@yahoo.com
Secretary	Rae Dowling	741-8335	raedowling@yahoo.com

Church Council – Team Leaders

Member-At-Large	Beverly Brockschmidt	352-464-1177	bsbrockschmidt@gmail.com
Parish Life	Stephney Rose	782-8005	stephneyr@yahoo.com
Education	Open		
Worship & Music	Rhoda Olson	201-6304	rhodarose100@gmail.com
Evangelism	Patty Kunkel	748-6669	pattykunkel@verizon.net
Youth Representative	Brooke Palmtag	252-646-8801	brookepalmtag@icould.com

Special Teams Leaders

Property	Bill Hoth	914-523-8425	whothjr@aol.com
Stewardship	Karen Symos	410-370-8666	ksymos@hotmail.com
AGC Liaison	Mary Hunter	746-3757	mehretired5@gmail.com
Altar Guild	Nancy Taylor	717-891-8791	mimitay@comcast.net
Faith Comm. Nurses	Karen Hansing	748-5806	riseuprnk@gmail.com
Fellowship	Pam Lange	404-358-1124	pamlangemobile@gmail.com
Stephen Ministry	Randy Hanson	981-9048	randley.hanson@verizon.net
New Members Coord.	Patty Kunkel	748-6669	pattykunkel@verizon.net
Outreach	Mary Torke		mtorke@comcast.net
	Sue Copeland		copelandfamily1992@gmail.com
Bookkeeper	Karen Symos	410-370-8666	ksymos@hotmail.com